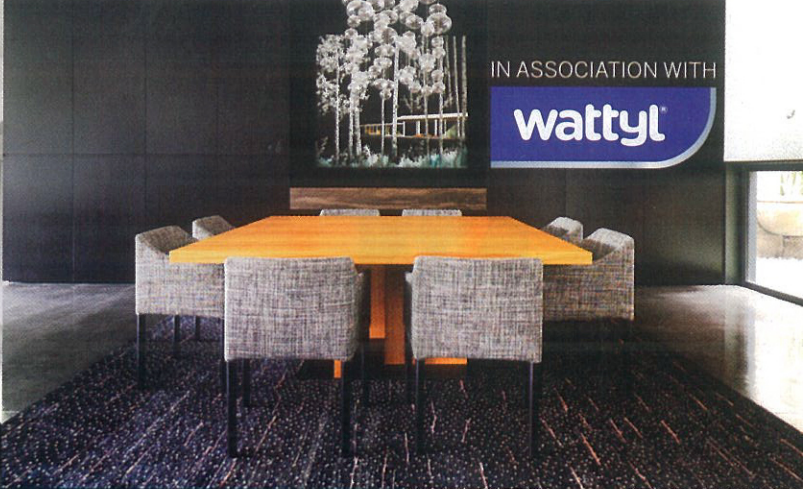


IN ASSOCIATION WITH

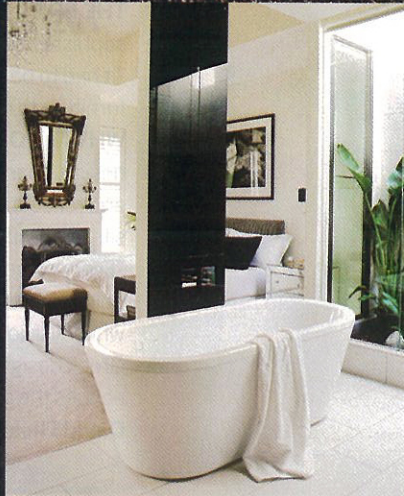
wattyl

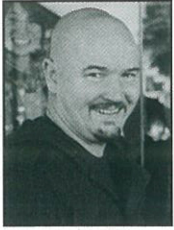


top 50 rooms

H&G's annual round-up of dazzling design brings together gorgeous rooms from homes around the country. What do they reveal? An unabashed passion for decorating, pure materials and the rise and rise of the outdoor room.

PRODUCED BY CHRIS PEARSON





Neil Mackenzie

25

GREAT ENTERTAINER

THE BRIEF: Top of the wish list in this home was a tranquil space with a view of the Sydney CBD. "The owners wanted a room to drift to after dinner or sit in as the sun dips," says architect Neil Mackenzie. It also had to celebrate their love of mid-century design.

WHY IT WORKS: As well as relaxation, this space is designed for family interaction and entertaining. Stylistically, it's a room of contrasts. The smooth central pod, which houses a guest bathroom, is finished in glossy auto enamel, in stark relief to concrete-block walls and travertine flooring. This interplay of the raw and the artificial pays homage to 1960s design. So, too, does the sitting area: it resembles a conversation pit, which was so popular in that era.

Mackenzie Pronk Architects; (02) 9559 4595 or www.mackenziepronk.com.au.



Hamish Guthrie

26

GIRL'S ZONE

THE BRIEF: In a new beach house near Melbourne, the owners asked for a bedroom for their 11-year-old daughter that's distinguished by "freshness, a relaxed feel and a sense of play," says interior designer Hamish Guthrie of Hecker Phelan & Guthrie.

WHY IT WORKS: A breezy feel pervades, thanks to the white walls, blond timbers and sisal flooring. Adding to the textural palette are the Hay rugs and Thomas Eyck ottomans, comfy seating for playmates. Their over-size scale creates a sense of play, as does the standard lamp and a Jonathan Adler cameo print. "The light tree is a bit of fantasy and theatre, while the ottomans lend flexibility and fun," says Guthrie. "This room is refined, yet inexpensive."

Hecker Phelan & Guthrie; (03) 9421 1644 or www.hpg.net.au.



Aimee Turner

27

BLACK BEAUTY

THE BRIEF: "This Brisbane ensuite was designed to be brave, yet functional, maximising views and ventilation while integrating the bathroom and wardrobe areas," says interior designer Aimee Turner.

WHY IT WORKS: The shower and bath enjoy views and privacy, too, thanks to the louvred windows. Black mosaic tiles encase walls and floors, creating a sense of volume. "We used a bold palette to give the space substance, with timber to create warmth," says Turner. This allows features such as the freestanding bath, floating vanity and louvred windows to shine. Integrated seating, recessed mirror cabinets and plenty of storage ensure this ensuite is uncluttered and highly functional.

Arkhefield; (07) 3831 8150 or www.arkhefield.com.au.

25

